

Slammers White B01

Rainier Valley Slammers

Auburn, WA

B01 total strength=341

attack=0.2 defense=0.21

fall league = RCL B01 Div 4, Spr RCL B01 Div 4

notes= Hargett 2013

alt names used:

RV Slammers White [B01]

RAINIER VALLEY SLAMMERS RVS B01 WHIT

RVS Slammers B01 Hargett

Rainier Valley Slammers B01 Hargett

Venues played:

RVS Classic BU12

Nike Crossfire Challenge Bronze U12

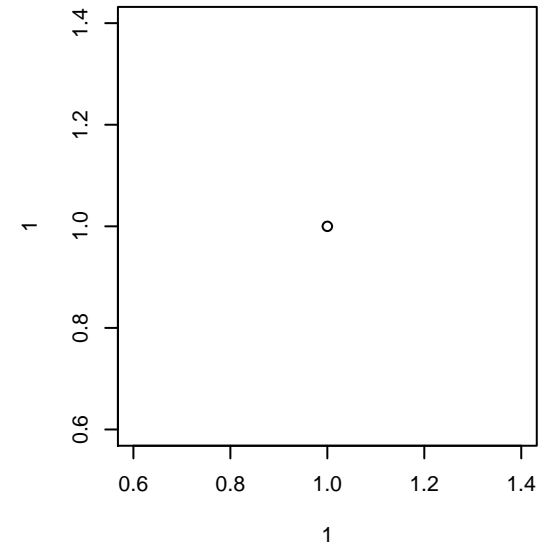
SeaTac Cup U12 U12

RCL B01 Div 4

PacNW Winter Classic Premier II U12

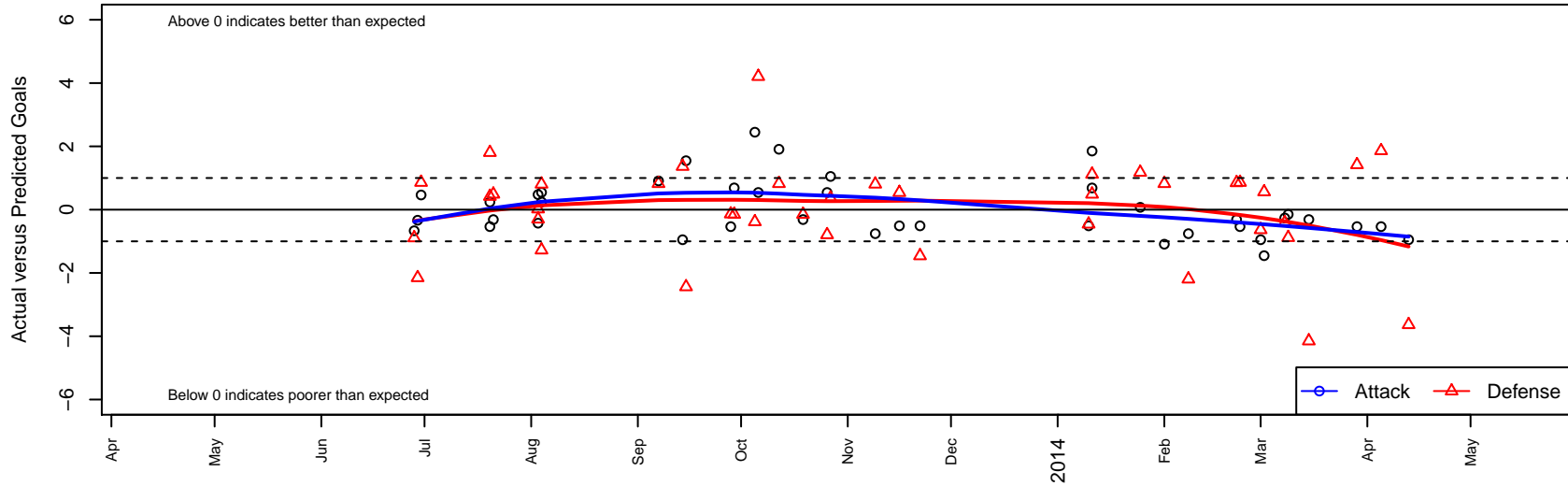
Spr RCL B01 Div 4

Challenge Cup B01 Division 2 – Challenge 2



Slammers White B01

Dots are actual minus expected GF (blue circles) and GA (red triangles).
Blue line is smoothed change in attack strength. Red is smoothed change in defense strength.



| | date | home | | away | | venue | pred.home | pred.away |
|-------|-------------|--------------------------|---|----------------------------|---|--|------------------|------------------|
| 26305 | 2014-04-13 | Slammers White B01 | 0 | FWFC White B01 | 5 | Challenge Cup B01 Division 2 – Challenge 2 | 0.95 | 1.37 |
| 25636 | 2014-04-05 | Eastside FC Grey B01 | 1 | Slammers White B01 | 0 | Challenge Cup B01 Division 2 – Challenge 2 | 2.86 | 0.54 |
| 25438 | 2014-03-29 | Snohomish United Red B01 | 2 | Slammers White B01 | 0 | Challenge Cup B01 Division 2 – Challenge 2 | 3.42 | 0.54 |
| 24629 | 2014-03-15 | Slammers White B01 | 0 | SSC Shadow B B01 | 8 | Spr RCL B01 Div 4 | 0.31 | 3.85 |
| 24272 | 2014-03-09 | Slammers White B01 | 1 | NWN Blue B01 | 3 | Spr RCL B01 Div 4 | 1.15 | 2.12 |
| 23973 | 2014-03-08 | Slammers White B01 | 0 | Seattle United Nova B01 | 6 | Spr RCL B01 Div 4 | 0.26 | 5.59 |
| 23713 | 2014-03-02 | Crossfire Premier D B01 | 2 | Slammers White B01 | 0 | Spr RCL B01 Div 4 | 2.56 | 1.45 |
| 23482 | 2014-03-01 | FWFC White B01 | 2 | Slammers White B01 | 0 | Spr RCL B01 Div 4 | 1.37 | 0.95 |
| 23254 | 2014-02-23 | Eastside FC Grey B01 | 2 | Slammers White B01 | 0 | Spr RCL B01 Div 4 | 2.86 | 0.54 |
| 23000 | 2014-02-22 | SSC Shadow B B01 | 3 | Slammers White B01 | 0 | Spr RCL B01 Div 4 | 3.85 | 0.31 |
| 22291 | 2014-02-08 | Harbor Premier Green B01 | 5 | Slammers White B01 | 0 | Spr RCL B01 Div 4 | 2.81 | 0.76 |
| 22013 | 2014-02-01 | Slammers White B01 | 0 | Eastside FC Blue B01 | 1 | Spr RCL B01 Div 4 | 1.09 | 1.82 |
| 21726 | 2014-01-25 | Slammers White B01 | 1 | FC Alliance B B01 | 1 | Spr RCL B01 Div 4 | 0.93 | 2.18 |
| 21119 | 2014-01-11 | NWN Blue B01 | 1 | Slammers White B01 | 3 | PacNW Winter Classic Premier II U12 | 2.12 | 1.15 |
| 21121 | 2014-01-11 | Crossfire Premier C B01 | 4 | Slammers White B01 | 1 | PacNW Winter Classic Premier II U12 | 4.49 | 0.31 |
| 21046 | 2014-01-10 | Slammers White B01 | 0 | PacNW White B01 | 5 | PacNW Winter Classic Premier II U12 | 0.51 | 4.54 |
| 19017 | 2013-11-22 | PacNW White B01 | 6 | Slammers White B01 | 0 | RCL B01 Div 4 | 4.54 | 0.51 |
| 18459 | 2013-11-16 | Slammers White B01 | 0 | PacNW White B01 | 4 | RCL B01 Div 4 | 0.51 | 4.54 |
| 17725 | 2013-11-09 | Slammers White B01 | 0 | Harbor Premier Green B01 | 2 | RCL B01 Div 4 | 0.76 | 2.81 |
| 16220 | 2013-10-27 | FWFC White B01 | 1 | Slammers White B01 | 2 | RCL B01 Div 4 | 1.37 | 0.95 |
| 15855 | 2013-10-26 | 3 Rivers Black B01 | 7 | Slammers White B01 | 1 | RCL B01 Div 4 | 6.21 | 0.46 |
| 14932 | 2013-10-19 | SSC Shadow B B01 | 4 | Slammers White B01 | 0 | RCL B01 Div 4 | 3.85 | 0.31 |
| 13879 | 2013-10-12 | Slammers White B01 | 3 | Eastside FC Blue B01 | 1 | RCL B01 Div 4 | 1.09 | 1.82 |
| 13291 | 2013-10-06 | Slammers White B01 | 1 | 3 Rivers Black B01 | 2 | RCL B01 Div 4 | 0.46 | 6.21 |
| 12852 | 2013-10-05 | Slammers White B01 | 4 | Snohomish United White B01 | 1 | RCL B01 Div 4 | 1.55 | 0.62 |
| 12330 | 2013-09-29 | Slammers White B01 | 1 | SSC Shadow B B01 | 4 | RCL B01 Div 4 | 0.31 | 3.85 |
| 11918 | 2013-09-28 | Eastside FC Grey B01 | 3 | Slammers White B01 | 0 | RCL B01 Div 4 | 2.86 | 0.54 |
| 10423 | 2013-09-15 | Crossfire Premier D B01 | 5 | Slammers White B01 | 3 | RCL B01 Div 4 | 2.56 | 1.45 |

| | date | home | | away | | venue | pred.home | pred.away |
|------|-------------|--------------------------|---|------------------------------|---|-------------------------------------|------------------|------------------|
| 9990 | 2013-09-14 | Slammers White B01 | 0 | FWFC White B01 | 0 | RCL B01 Div 4 | 0.95 | 1.37 |
| 9051 | 2013-09-07 | Eastside FC Blue B01 | 1 | Slammers White B01 | 2 | RCL B01 Div 4 | 1.82 | 1.09 |
| 5684 | 2013-08-04 | ISC Arsenal Red B01 | 2 | Slammers White B01 | 2 | SeaTac Cup U12 U12 | 0.72 | 1.45 |
| 5687 | 2013-08-04 | Slammers White B01 | 1 | Harbor Premier Green B01 | 2 | SeaTac Cup U12 U12 | 0.76 | 2.81 |
| 5402 | 2013-08-03 | Slammers White B01 | 0 | Tacoma United San Martin B01 | 7 | SeaTac Cup U12 U12 | 0.43 | 7.02 |
| 5404 | 2013-08-03 | Slammers Orange B01 | 5 | Slammers White B01 | 1 | SeaTac Cup U12 U12 | 4.70 | 0.52 |
| 4198 | 2013-07-21 | Crossfire Premier C B01 | 4 | Slammers White B01 | 0 | Nike Crossfire Challenge Bronze U12 | 4.49 | 0.31 |
| 3739 | 2013-07-20 | Harbor Premier Green B01 | 1 | Slammers White B01 | 1 | Nike Crossfire Challenge Bronze U12 | 2.81 | 0.76 |
| 3742 | 2013-07-20 | Snohomish United Red B01 | 3 | Slammers White B01 | 0 | Nike Crossfire Challenge Bronze U12 | 3.42 | 0.54 |
| 2439 | 2013-06-30 | Eastside FC Grey B01 | 2 | Slammers White B01 | 1 | RVS Classic BU12 | 2.86 | 0.54 |
| 2264 | 2013-06-29 | Slammers White B01 | 0 | Eastside FC White B01 | 8 | RVS Classic BU12 | 0.33 | 5.85 |
| 2124 | 2013-06-28 | Slammers White B01 | 0 | Impact FC Black B01 | 4 | RVS Classic BU12 | 0.67 | 3.11 |